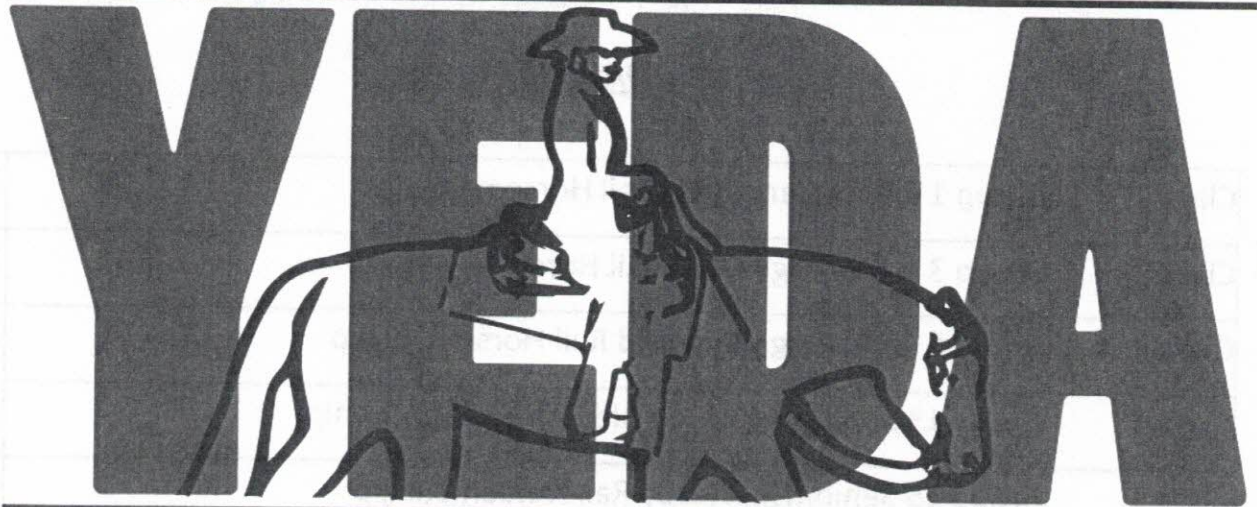


YOUTH EQUESTRIAN



DEVELOPMENT ASSOCIATION

www.showyeda.com

April Fools Fun Show
Sponsored by the High Desert Horseman

B Bar M Arena

660 Shoshone

Wells, NV 89835

YEDA MISSION STATEMENT Our mission is to provide an equestrian riding program for youth students, via both instructional and experiential learning opportunities. To accomplish this we will engage in equestrian competitions, instructional clinics, networking events and occasions for recruitment that includes but not limited to scholarship disbursements.

Time Schedule

9:00 am Coaches Meeting
9:30 am Schooling of Horses
10:00 am Competition Begins

Saturday Order of Classes

Class 1.	Group 1 Elementary Pearl Rail Horsemanship	3
Class 2.	Group 3 Junior High Opal Rail Horsemanship	1
Class 3.	Group 5 Junior High Emerald Rail Horsemanship	3
Class 4.	Group 13 Senior High Emerald Rail Horsemanship	2
Class 5.	Group 15 Senior High Ruby Rail Horsemanship	1
Class 6.	Group 2 Elementary Pearl Pattern Horsemanship	3
Class 7.	Group 4 Junior High Opal Pattern Horsemanship	1
Class 8.	Group 6 Junior High Emerald Pattern Horsemanship	3
Class 9.	Group 14 Senior High Emerald Pattern Horsemanship	2
Class 10.	Group 16 Senior High Ruby Pattern Horsemanship	1

Show Officials

Show Manager: Laurel Wachtel

Show Steward:

Show Judge: Jamie Armstrong

Show Secretary: Erin Smith

Ring Steward:

Announcer: Paula Otto

Patterns:

Pearl and Opal – Pattern #10

Emerald – Pattern #5

Ruby – Pattern #7

Class 1 Group 1 Elementary Pearl Rail Horsemanship (1)

<i>Back#</i>	<i>Name</i>	<i>Team</i>	<i>Draw</i>	<i>Horse</i>
1606	Gabrielle Smith	High Desert Horsemen A	1	Squirrel
1702	Anna Woodbury	High Desert Horsemen A	2	Sunny
1871	Audrey Herth	High Desert Horsemen A	3	Nitro

1st:		2nd:		3rd:		4th:		5th:		6th:	
------	--	------	--	------	--	------	--	------	--	------	--

Class 2 Group 3 Junior High Opal Rail Horsemanship (3)

<i>Back#</i>	<i>Name</i>	<i>Team</i>	<i>Draw</i>	<i>Horse</i>
828	Leena McGarr	High Desert Horsemen A	1	Bailey

1st:		2nd:		3rd:		4th:		5th:		6th:	
------	--	------	--	------	--	------	--	------	--	------	--

Class 3 Group 5 Junior High Emerald Rail Horsemanship (4)

<i>Back#</i>	<i>Name</i>	<i>Team</i>	<i>Draw</i>	<i>Horse</i>
1622	Alivia Smith	High Desert Horsemen B	1	Sunny
1569	Joslynn Vallejo	High Desert Horsemen B	2	Chrysteale
1587	April Bochman	High Desert Horsemen B	3	Squirrel

1st:		2nd:		3rd:		4th:		5th:		6th:	
------	--	------	--	------	--	------	--	------	--	------	--

Class 4 Group 13 Senior High Emerald Rail Horsemanship (2)

<i>Back#</i>	<i>Name</i>	<i>Team</i>	<i>Draw</i>	<i>Horse</i>
1593	Grace Otto	High Desert Horsemen A	1	Nitro
1655	Lillian Harney	High Desert Horsemen A	2	Mik

1st:		2nd:		3rd:		4th:		5th:		6th:	
------	--	------	--	------	--	------	--	------	--	------	--

Class 5 Group 15 Senior High Ruby Rail Horsemanship (1)

<i>Back#</i>	<i>Name</i>	<i>Team</i>	<i>Draw</i>	<i>Horse</i>
1571	Madison Wachtel	High Desert Horsemen A	1	Squirrel

1st:		2nd:		3rd:		4th:		5th:		6th:	
------	--	------	--	------	--	------	--	------	--	------	--

Class 6 Group 2 Elementary Pearl Pattern Horsemanship (1)

Back#	Name	Team	Draw	Horse
1606	Gabrielle Smith	High Desert Horsemen A	1	Bailey
1702	Anna Woodbury	High Desert Horsemen A	2	Nitro
1871	Audrey Herth	High Desert Horsemen A	3	Sunny

1st:		2nd:		3rd:		4th:		5th:		6th:	
------	--	------	--	------	--	------	--	------	--	------	--

Class 7 Group 4 Junior High Opal Pattern Horsemanship (3)

Back#	Name	Team	Draw	Horse
828	Leena McGarr	High Desert Horsemen A	1	Chrystelee

1st:		2nd:		3rd:		4th:		5th:		6th:	
------	--	------	--	------	--	------	--	------	--	------	--

Class 8 Group 6 Junior High Emerald Pattern Horsemanship (4)

Back#	Name	Team	Draw	Horse
1622	Alivia Smith	High Desert Horsemen B	1	Squirrel
1569	Joslynn Vallejo	High Desert Horsemen B	2	Nitro
1587	April Bochman	High Desert Horsemen B	3	Chrystelee

1st:		2nd:		3rd:		4th:		5th:		6th:	
------	--	------	--	------	--	------	--	------	--	------	--

Class 9 Group 14 Senior High Emerald Pattern Horsemanship (2)

Back#	Name	Team	Draw	Horse
1593	Grace Otto	High Desert Horsemen A	1	Squirrel
1655	Lillian Harney	High Desert Horsemen A	2	Sunny

1st:		2nd:		3rd:		4th:		5th:		6th:	
------	--	------	--	------	--	------	--	------	--	------	--

Class 10 Group 16 Senior High Ruby Pattern Horsemanship (1)

Back#	Name	Team	Draw	Horse
1571	Madison Wachtel	High Desert Horsemen A	1	Mik

1st:		2nd:		3rd:		4th:		5th:		6th:	
------	--	------	--	------	--	------	--	------	--	------	--

Monday SCOREBOARD

Senior High School Team						
Team	Ruby Pattern Horsemans hip	Ruby Rail Horsemans hip	Emerald Pattern Horsemans hip	Emerald Rail Horseman ship	Total	Final Placings
High Desert A						

Junior High School Team						
Team	Emerald Pattern Horsemans hip	Emerald Rail Horsemans hip	Opal Pattern Horsemans hip	Opal Rail Horsemansh ip	Total	Final Placings
High Desert B						

Show Results

SR High School Team		JR High School Team	
High Point Team	HDH A	High Point Team	HDH B
Res. High Point Team	N/A	Res. High Point Team	N/A
High Point Rider		High Point Rider	
Res. High Point Rider		Res. High Point Rider	
Sportsmanship Award(s)			
Horse of the Show			
Best Groomed Horse of the Show			

Meet our Horses!

Bailey - Grey Arabian Mare - No spurs, two hand option, Set up for Right lead

Chrysteele - Sorrel Mare - use split reins, spurs appropriate to division, can anticipate in pattern work, two hand option, crop option

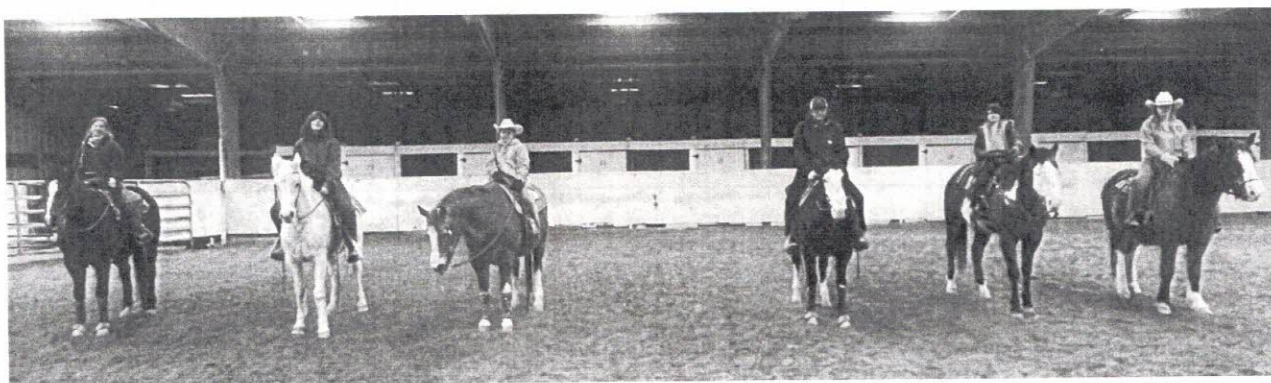
Mik - Appy Gelding - Two hand option, long rein, pick up shoulder in lope transition

Nitro - Paint Gelding - Only has one eye, two hand option, no spurs

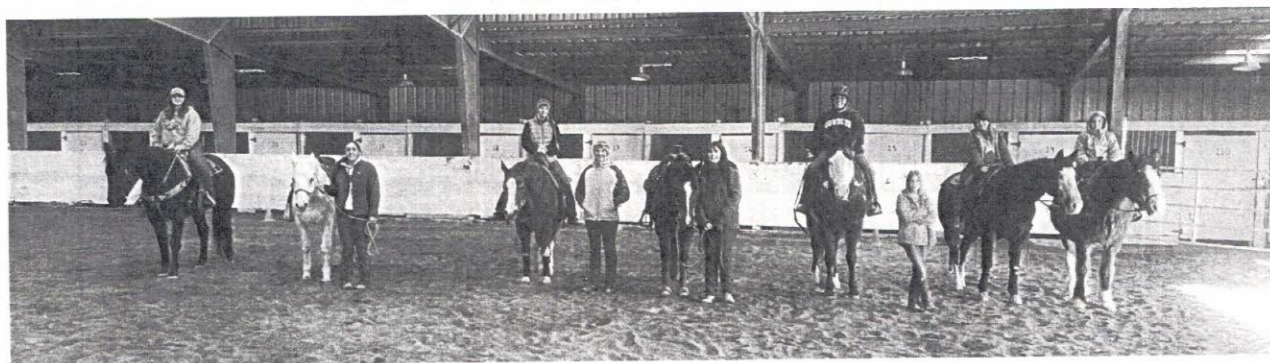
Squirrel - Brown Paint Mare - Divisions appropriate spurs, light contact with face, leg release for stop, two hand option

Sunny - Bay Mare - use two hands, spurs appropriate to division

Meet our Team Members!



From Left to Right: April Bochman on Sunny, Grace Otto on Bailey, Audrey Herth on Chrysteele, Lillian Harney on Squirrel, Anna Woodbury on Nitro, and Leena McGarr on Pearl



From Left to Right: Joslynn Vallejo on Ivy, Lillian Harney with Bailey, Madison Wachtel on Chrsteele, Alivia Smith standing, Grace Otto with Sunny, Leena McGarr on Nitro, Gabrielle Smith standing, Anna Woodbury on Squirrel, and Audrey Herth on Pearl

<u>Team</u>	<u>Name</u>	<u>Grade</u>	<u>Number</u>
High Desert Horsemen A	Anna Woodbury	4	1702
High Desert Horsemen A	Audrey Herth	4	1871
High Desert Horsemen A	Gabrielle Smith	5	1606
High Desert Horsemen A	Grace Otto	9	1593
High Desert Horsemen A	Lillian Harney	10	1655
High Desert Horsemen A	Madison Wachtel	12	1571

<u>Team</u>	<u>Name</u>	<u>Grade</u>	<u>Number</u>
High Desert Horsemen B	Alivia Smith	7	1622
High Desert Horsemen B	April Bochman	8	1587
High Desert Horsemen B	Joslynn Vallejo	8	1569
High Desert Horsemen B	Leena McGarr	8	828

Meet your show officials!

Show Manager/High Desert Horsemen Team Coach: Laurel Wachtel - AQHA Judge and AQHA Professional Horsemen, 2 time World Champion, has been coaching students for over 30 years from beginners to World Championship exhibitors, from Wells, Nevada

Show Steward: -

Show Judge: Jamie Armstrong - FFA and 4-H Horse Judging Champion, FFA Horse Judging Coach, AQHA Amateur competitor, mother to three horse crazy kids, from Winnemucca, Nevada

Show Secretary: Erin Smith - Former Technology Teacher and FBLA advisor, helping us out as show secretary again for this show, from Wells, Nevada

Thank you to our generous sponsors!

Wells Rural Electric Company

The Otto Clinic

B-M Arena

Roy's Market

The Smith Family

Thank you to our fundraising supporters!

Our families and supporters who helped with the YEDA beef raffle!

All who prepared and bought Breakfast Burritos!



2022-2023

COLLEGE & UNIVERSITY PARTNERS

COLLEGE PARTNERSHIP PROGRAM PARTICIPANTS

YEDA would like to thank the following colleges and universities for being a part of the YEDA College Partnership Program. They support YEDA by providing their facilities and horses for YEDA shows, providing scholarship opportunities, and introducing our riders to the next level of team riding opportunities..

Black Hawk College

Providing Show Facilities & Horses



LAKE ERIE COLLEGE

Providing Show Facilities, Horses & Scholarships



MIDWAY UNIVERSITY

Providing Show Facilities & Horses



University of Findlay

Providing Show Facilities & Scholarships



Alfred University

Providing Show Facilities & Horses

COLLEGE & UNIVERSITY PATRONS

YEDA would like to thank the following colleges and universities for being YEDA Patrons: they provide scholarships and support YEDA at Nationals and the college fair.



St. Andrews UNIVERSITY
A Branch of Webber International University

Providing Scholarships



MIAMI UNIVERSITY

Providing Show Facilities & Horses

MIDDLE TENNESSEE

STATE UNIVERSITY
Providing Show Facilities & Horses

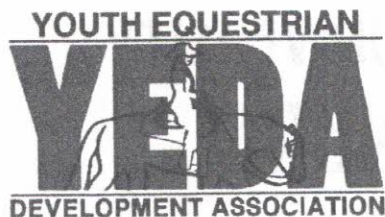


Missouri State

Providing Show Facilities & Horses



THIEL COLLEGE



2022-2023 SPONSORS

YEDA would like to thank all of the sponsors for their support of the Scholarship Incentive Fund and YEDA Riders. We ask that you support them with your patronage.



Sponsor of YEDA High Point Rider Awards



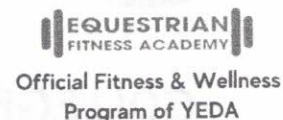
Sponsor of YEDA High Point Team Awards



Sponsor of YEDA High Point Rider Awards



Sponsor of YEDA Best Groomed Horse Award



YEDA SCHOLARSHIP SPONSORS



Proudly Offering a \$1000 Senior Achievement Scholarship



Proudly Offering a \$1000 Senior Achievement Scholarship

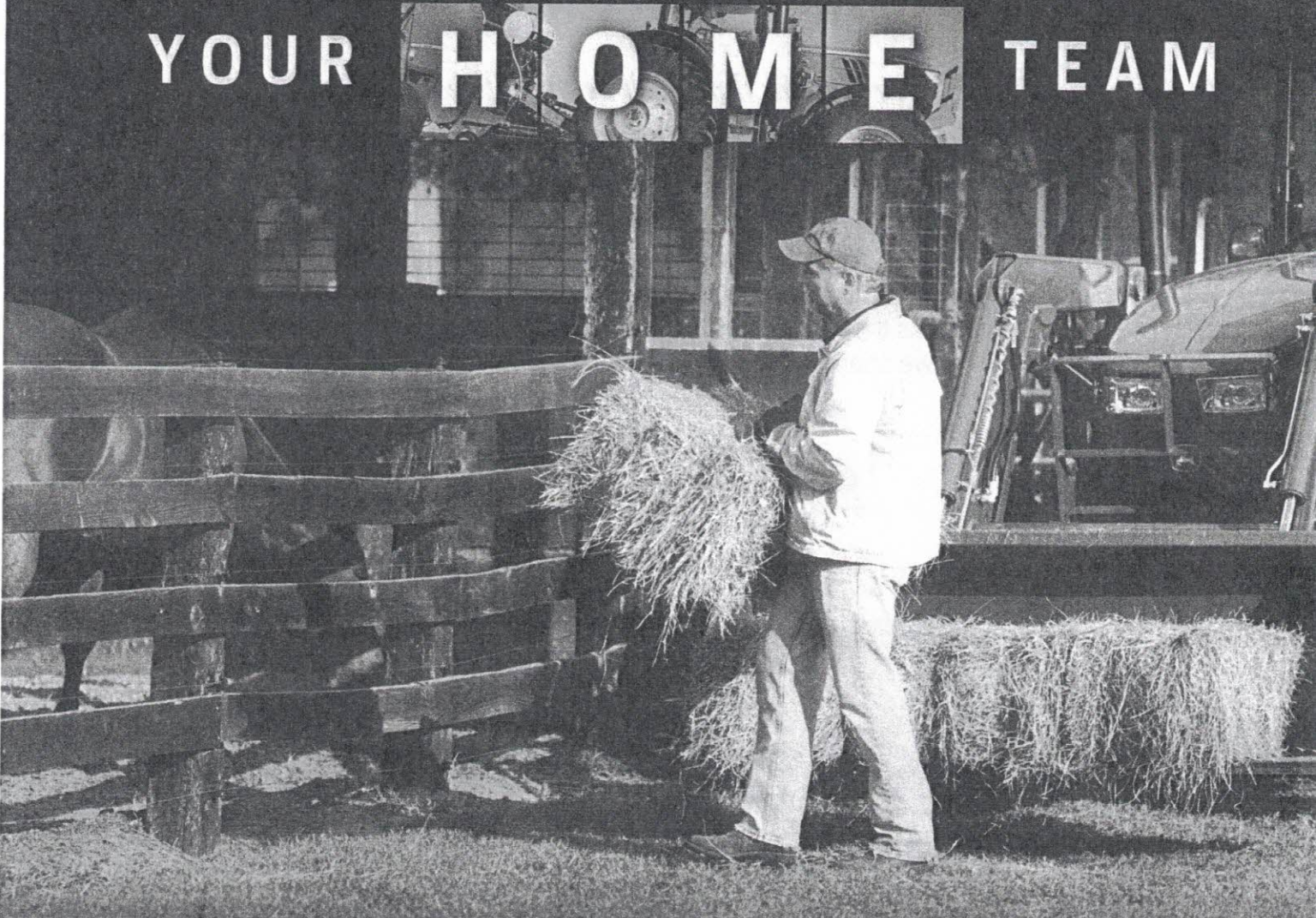


Proudly Offering a \$2000 Senior and \$1000 Junior Achievement Scholarships



Proudly Offering a \$1750 High School Scholarship

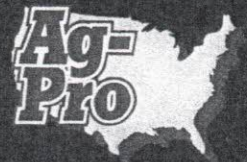
YOUR **H O M E** TEAM



ASK ABOUT OUR EQUINE DISCOUNT
UP TO 28% OFF MSRP ON EQUIPMENT FOR QUALIFYING EQUINE OPERATIONS



JOHN DEERE



77+ LOCATIONS

AgProCo.com

*Certain rules and restrictions apply. MSRP discounts are in lieu of all other discounts. Cash discounts may not be used in conjunction with the Government Direct CBD, Special Discount, MDD, CWR, Association/Segment Program, or published Golf retail bonus programs. Offer subject to change without notice.

WE ARE AQHYA

*We are lessons that can't be taught in a classroom.
We are teamwork, partnership and lifelong friendship.
We are confidence and respect.*

AQHYA membership earns you an invitation to leadership events and American Quarter Horse competitions, plus unlocks thousands of scholarship dollars. In a world that is divided, we share a common bond. This is where you belong.

AQH YA
AMERICAN QUARTER HORSE
YOUTH ASSOCIATION



aqha.com/youth

JOIN TODAY
FOR ~~25~~

\$19

USE CODE:
YEDA

